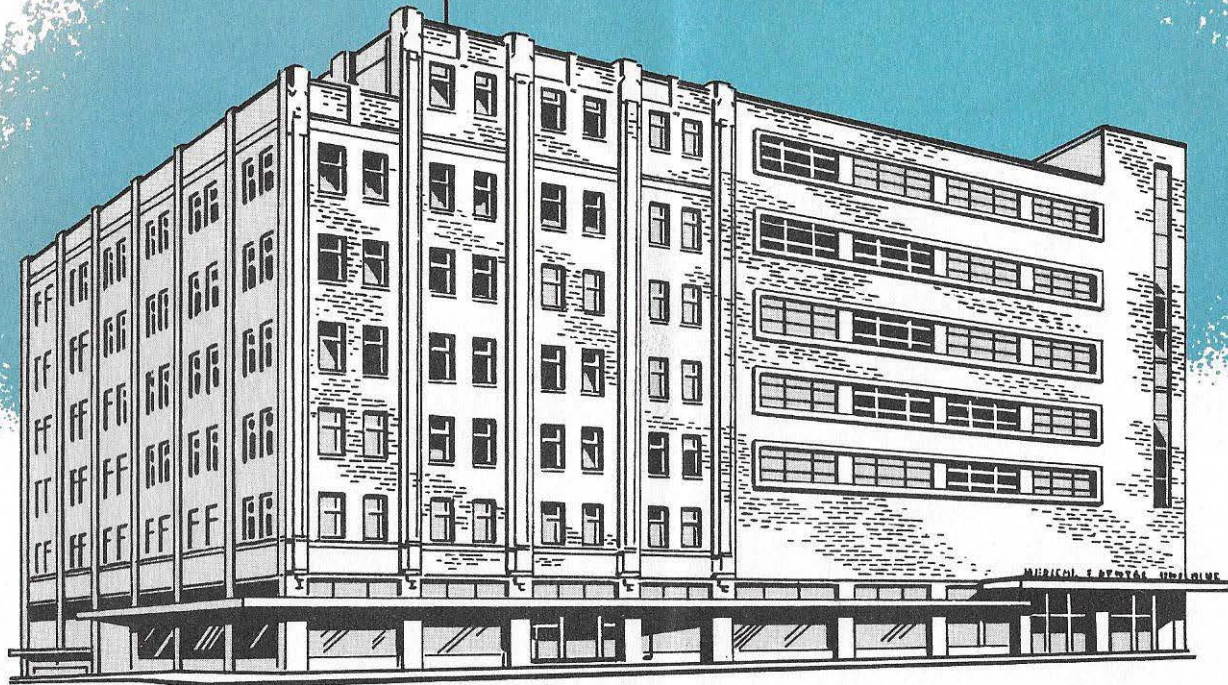


MEDICAL & DENTAL BUILDING . .



Open your practice in Everett, Washington

**IN MODERN OFFICES
DESIGNED FOR YOU**

Foreword

The MEDICAL & DENTAL BUILDING is of Class A fireproof construction and especially designed throughout for doctors use. Most careful study and consideration has been given to acoustics, ventilation, light, heat, gas and air facilities for the convenience of both tenants and patrons. Provisions have also been made for toilet installations wherever desired. Each floor is provided with a ladies' lounge and rest room . . . there is a doctors' coffee lounge, modern beauty parlor facilities, and a men's barber shop. Also within the building are complete radiologic services including diagnosis and therapy.

OFFICERS AND DIRECTORS OF MEDICAL & DENTAL BUILDING

Officers

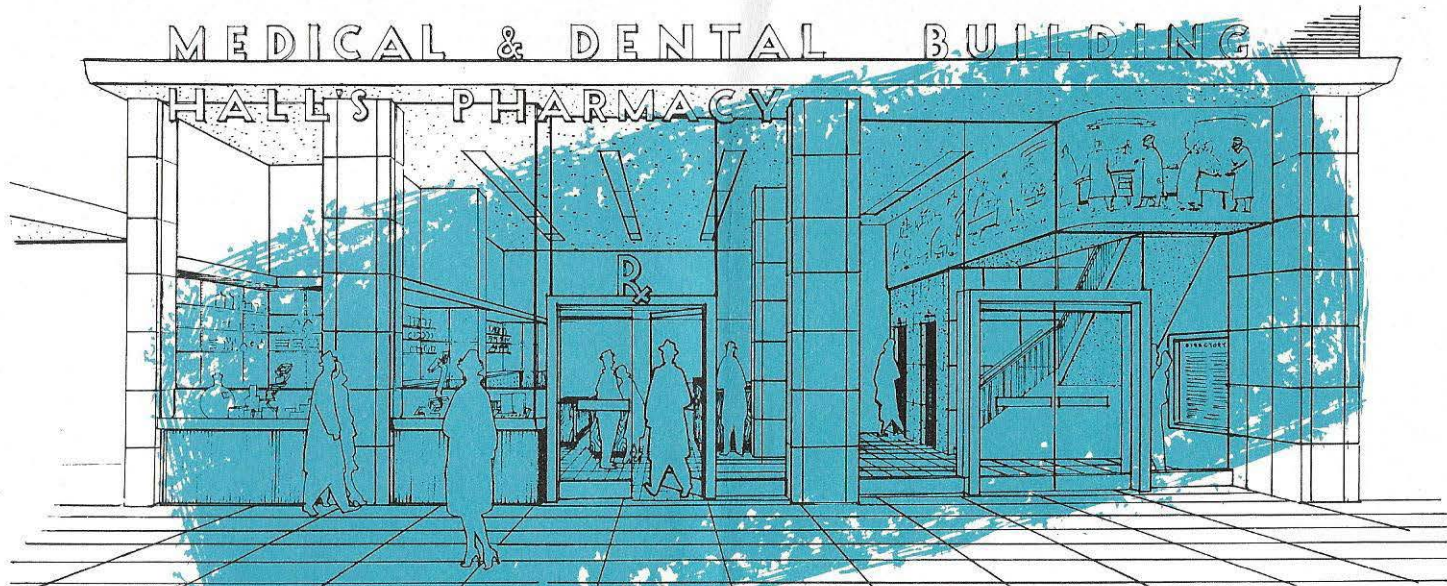
CLIFF HENNING *President*
JOHN A. WOODS *Vice-President*
DAN A. DURYEE *Treasurer*
STEPHEN C. SAUNDERS *Secretary*

Directors

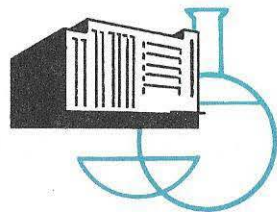
CLIFF HENNING MRS. W. J. PILZ
JOHN A WOODS E. G. STARTUP
STEPHEN C. SAUNDERS

Property Managers

D. A. DURYEE & CO.
EVERETT, WASHINGTON

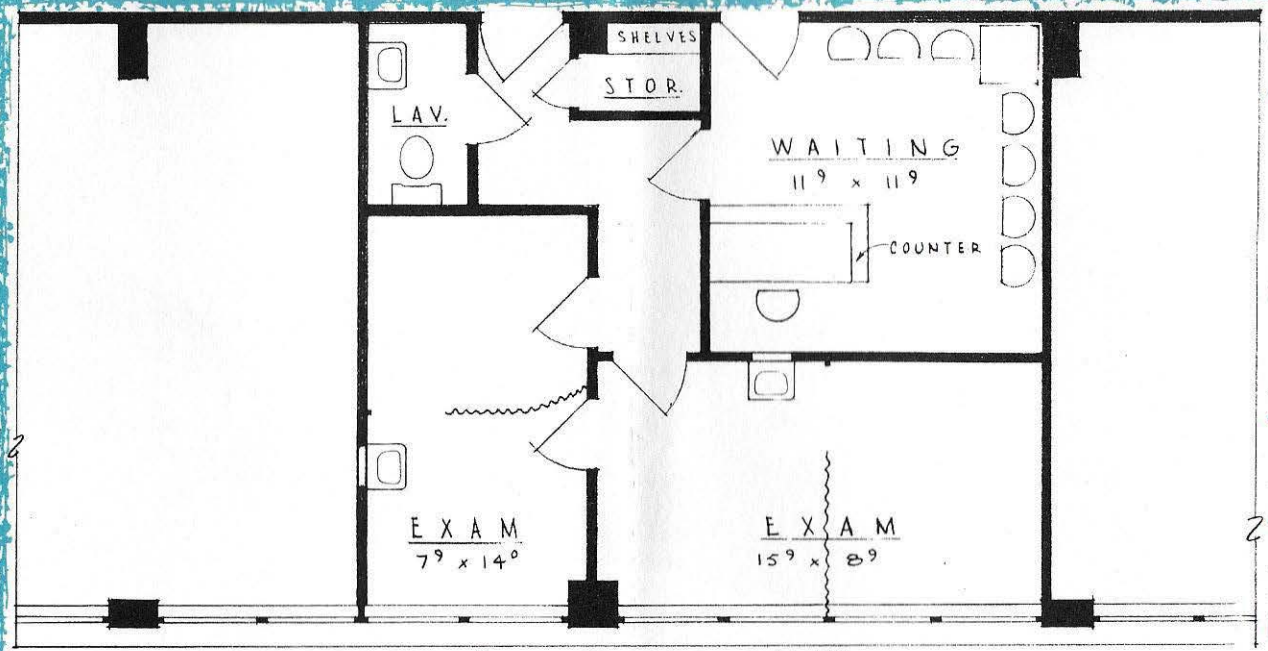


Main Lobby



The main lobby is well lighted and airy . . . has terrazzo flooring with a generous use of such materials as aluminum, formica, marble, terra cotta and hand etched murals. The automatically controlled electric elevators embrace the latest safety features and developments assuring smooth, noiseless and efficient operation.

THIS FLOOR PLAN IS MERELY SUGGESTIVE • LAYOUTS WILL BE MADE FOR TENANTS TO SUIT
INDIVIDUAL REQUIREMENTS

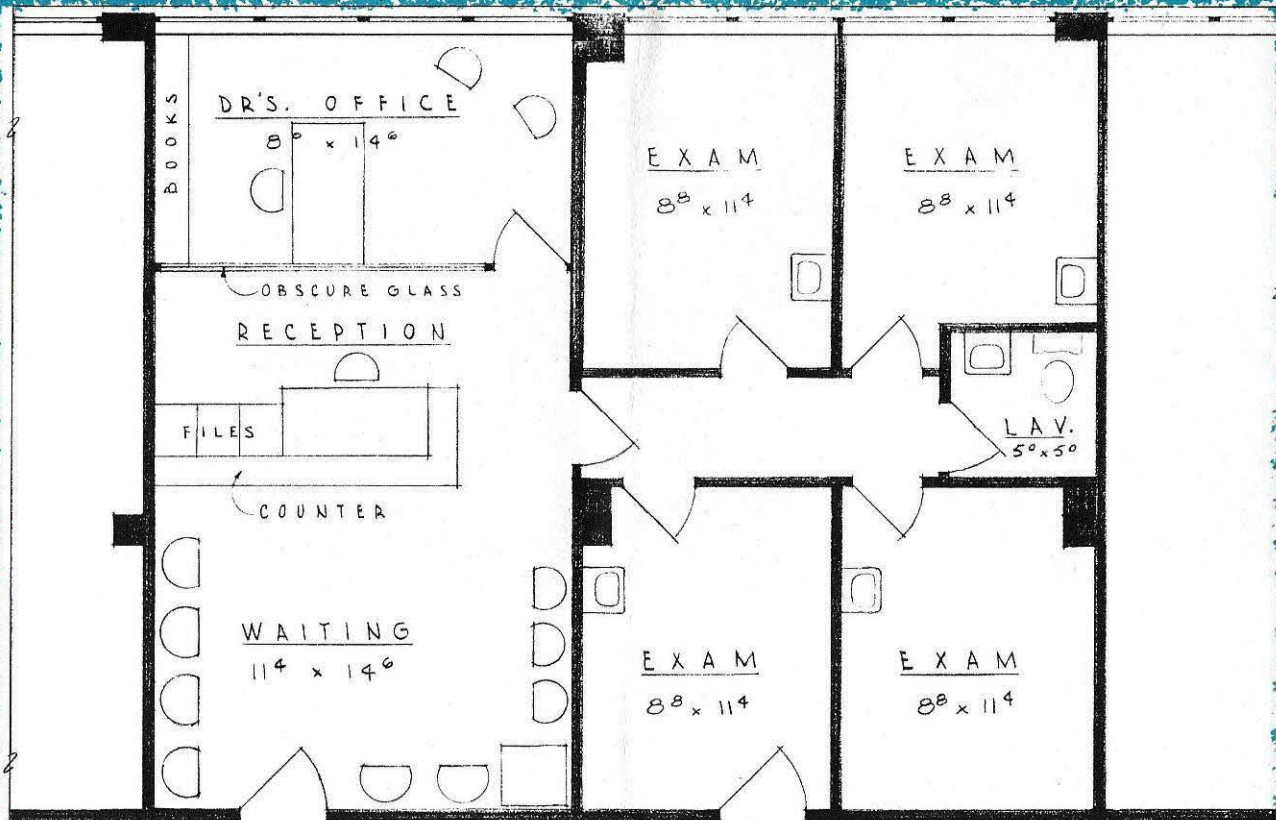


For the Surgeon or for Limited Practice

This floor plan is especially designed for consultation and examination purposes for use by a specialist whose space needs are augmented by hospital facilities and who is engaged in a limited practice.

THIS FLOOR PLAN IS MERELY SUGGESTIVE • LAYOUTS WILL BE MADE FOR TENANTS

TO SUIT INDIVIDUAL REQUIREMENTS



For the Specialist or General Practicing Physician

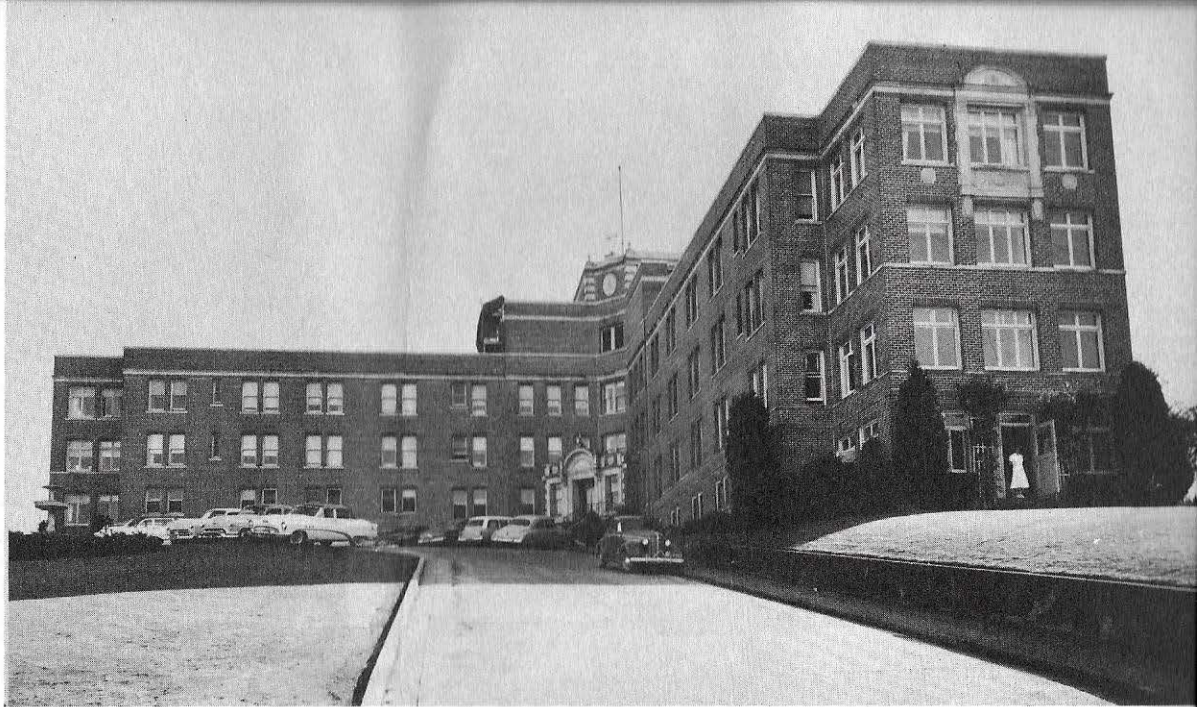
Provided with large waiting room, a private consultation office and four examining or treatment rooms, this floor plan is especially designed to meet the needs of the physician or specialist engaged in larger practice.



GENERAL HOSPITAL

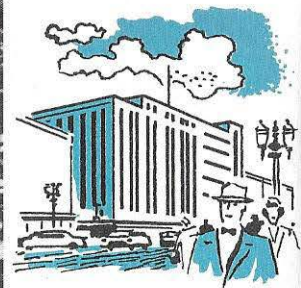
Everett's Community Hospital originally had but 100 bed accommodations. The addition of a large maternity wing together with nurses' quarters embraces a solid block of Hospital property.





PROVIDENCE HOSPITAL

Providence Hospital has served the people of the Everett area since 1905. It is fully accredited by the Joint Commission on Accreditation. Accommodations are 125 beds and 18 bassinets.



This air view of Everett's main business district shows the central location of the Medical & Dental Building . . . easily accessible from any point in the surrounding community.

One of Everett's Weyerhaeuser Lumber Mills by moonlight. Long recognized as a thriving industrial community, our city is now considered to be the most rapidly growing pulp and paper center in the world.





Scenic Marine views, gorgeous sunsets as pictured here, play an important part in Everett's family and recreational life. Boating, fishing and hunting are enjoyed by the many sportsmen in this area.

Everett and Snohomish County's mountain streams, lakes, rivers and salt water offer many thrilling and diversified experiences to the sports-minded and to whole families who enjoy close-by weekend picnics.





Everett Golf & Country Club

Recognized as one of the most beautiful 18 hole private courses in the country, year round golf and social activities are a constant source of satisfaction and enjoyment to Everett's leading citizens.